

Chute Cleansing - Water Slide Systems

The RexWall Composites Technology offers a joint less chute including a repairing and cleansing concept.



Following advantages of the repairing and cleansing concept are:

- No new acquisition essential
- Extension of the term
- Shorting of the down time in comparison to a new acquisition
- Lower costs of input
- Periodic maintenance connected to a maintenance contract



Coat of the renovated chute



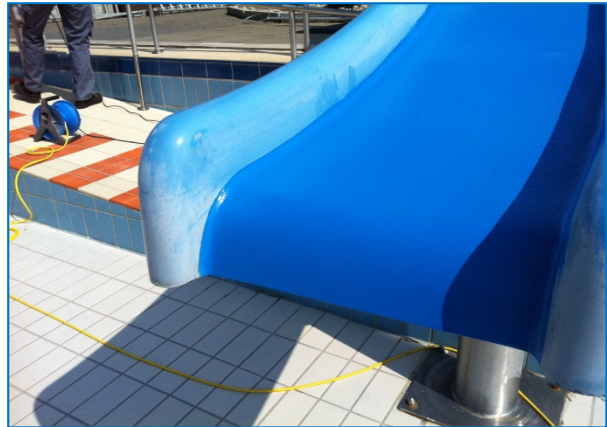
joint less - safety

Deutsche Composite GmbH
Taking German Composite Technology to the Next Level

Shipyards – South * Bahnhofstrasse 2-14 * 21481 Lauenburg/Elbe * Germany
Managing Director: Dietmar Biessler * Trade No. HRB 11111 HL
Phone: +49 (0)4153 59977 38 * Fax: +49 (0)4153 59977 39
www.deutsche-composites.de * [info \[at\] rexwall.com](mailto:info@rexwall.com)

Our scope of services includes:

- Expertises of chutes
- Providing preliminary cost estimates
- Replacement purchases of chutes
- Privation repairing by 24/h service



Gladly, we will be of help for your next projects and further questions.
Please contact us: **info [at] rexwall.com**

Deutsche Composite GmbH
Taking German Composite Technology to the Next Level

Shipyard – South * Bahnhofstrasse 2-14 * 21481 Lauenburg/Elbe * Germany
Managing Director: Dietmar Biessler * Trade No. HRB 11111 HL
Phone: +49 (0)4153 59977 38 * Fax: +49 (0)4153 59977 39
www.deutsche-composites.de * info [at] rexwall.com